

# SD Biosensor at-home rapid COVID-19 test

**Note:**

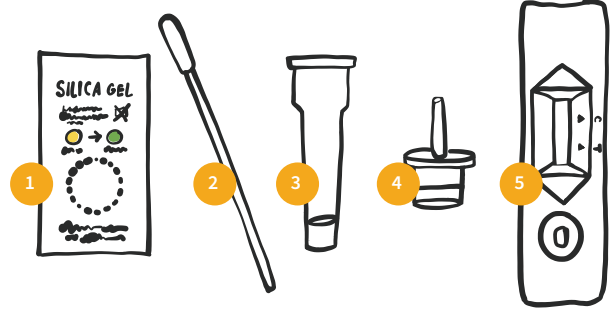
It is important to follow the instructions carefully for accurate results.

**Your testing kit contains:**

1. silica gel pack (do not use test if beads are green)
2. nose swab
3. tube
4. dropper lid
5. test unit

**You will need:**

- ✓ clean, level surface
- ✓ paper towel
- ✓ hand sanitizer
- ✓ timer or clock



Adapted from SD Biosensor product insert — Updated Jan. 19, 2022

**Do not eat or drink for at least 30 minutes before taking the test.**

**Before you start:**

- ✓ Clean your hands.
- ✓ Place paper towel on a clean, level surface.
- ✓ Open the contents of your testing kit.
- ✓ Place tube in stand so that it is upright.
- ✓ Write your name with marker or pencil on the unit if testing more than one person.

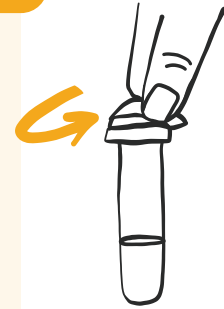


Scan this QR code for an instructional video: [testtoprotect.ca/biosensor](https://testtoprotect.ca/biosensor)

**Note:**

For better accuracy of the test, we recommend swabbing both the throat and nostril using the same swab. If you choose to only swab one spot, it must be your nostril (throat swab alone will not give accurate results).

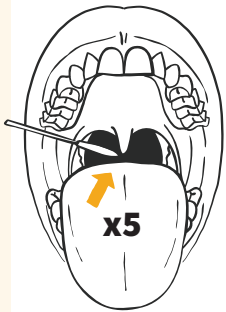
**1**



Peel the top off the tube, being careful not to spill the clear liquid.

Put the tube into the tube holder hole on the top of the box.

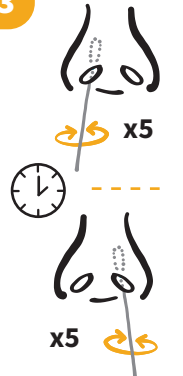
**2**



Tilt your head back, and open your mouth.

Without touching the sides of your mouth or tongue, use the swab to rub the back of your throat (area shaded black in the drawing) 5 times back and forth (this may cause you to gag).

**3**

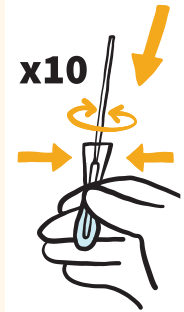


Using the same swab, put the swab into your nostril about 2cm (for small children, just put the swab into the nostril).

Rub and rotate the swab vigorously 5 times, for at least 15 seconds.

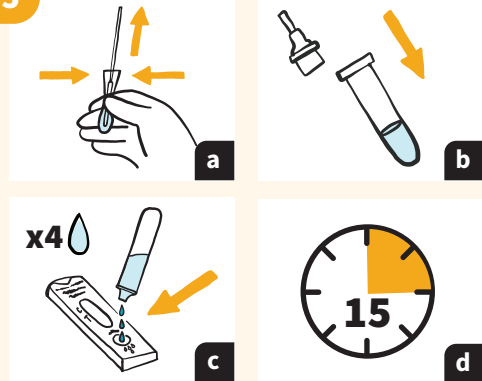
Repeat for the other nostril using the same swab (your eyes may water).

**4**



Gently lower swab into the tube of liquid and stir the swab in the liquid at least 10 times while squeezing the tube around it.

**5**



Squeeze the liquid out of the swab by pinching the tube and slowly pulling the swab out (a). **Throw out the swab.**

Put the dropper lid on the top of the tube (b) and turn it upside down to gently squeeze 4 drops of liquid into the small round well of the test unit (c). **CAUTION**, the drops come out quickly.

Leave the test unit on a level, flat surface for 15 minutes (d).

**6**

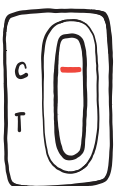


When finished, save your tube stand and put remaining testing supplies in the garbage, sanitize your hands and clean your testing space.



The area that displays the results will turn pink before turning back to white when it is time to read the result.

**RESULTS (AFTER 15-30 MINUTES)**

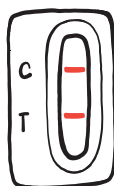


**NEGATIVE — ONE LINE**

one line at the C (control) mark, no line at the T (test) mark

Please note:

- ✓ A single negative result cannot be used to rule out COVID-19 in a person with symptoms.
- ✓ Stay at home if sick and repeat the test in 48 hours.



**POSITIVE — TWO LINES**

one line at the C (control) mark, one line at the T (test) mark

You must:

- ✓ Isolate immediately.
- ✓ To notify Public Health of your positive test result, please complete the *Report and Support* screening questionnaire at [c19hc.nshealth.ca/self-report](https://c19hc.nshealth.ca/self-report).
- ✓ If you test positive using a rapid test, you need to consider yourself as having COVID-19, assume you are contagious, and you and your household must self-isolate. You also need to inform your close contacts.
- ✓ Visit [nshealth.ca/testedpositiveforcovid](https://nshealth.ca/testedpositiveforcovid) to get more information on what to do.

**Thank you  
for getting tested!**

**INVALID — If your test does not match either the negative or positive examples, the test should be repeated with a new kit.**